



33Z-Meter

Truck-Mounted Concrete Boom Pump

All new Putzmeister 33Z – benefits and key features

Putzmeister's new 33-4.16H boom pump incorporates the latest Putzmeister designs and technology. The 33-4.16H combines proven components and new improvements to increase performance, reliability, and ease of use.

Benefits at a Glance

Proven Boom Design: The 3304.16J boom pump features a proven boom design and optimized pipe routing to improve material flow. This enhancement reduces sharp turns and changes in pipe direction.

New Pedestal: Features the TRDI69 pedestal which is designed to reduce boom bounce, improve reliability, and ease of use. Overlap of the front telescopic leg is greater to distribute forces and reduce vibrations. Passenger side of the deck is now clean for storage and access. The new pedestal is designed to stiffen during pumping to provide added stability and provide flexibility with the chassis while commuting.

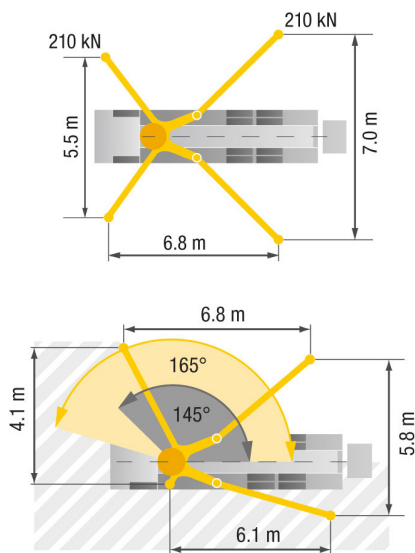
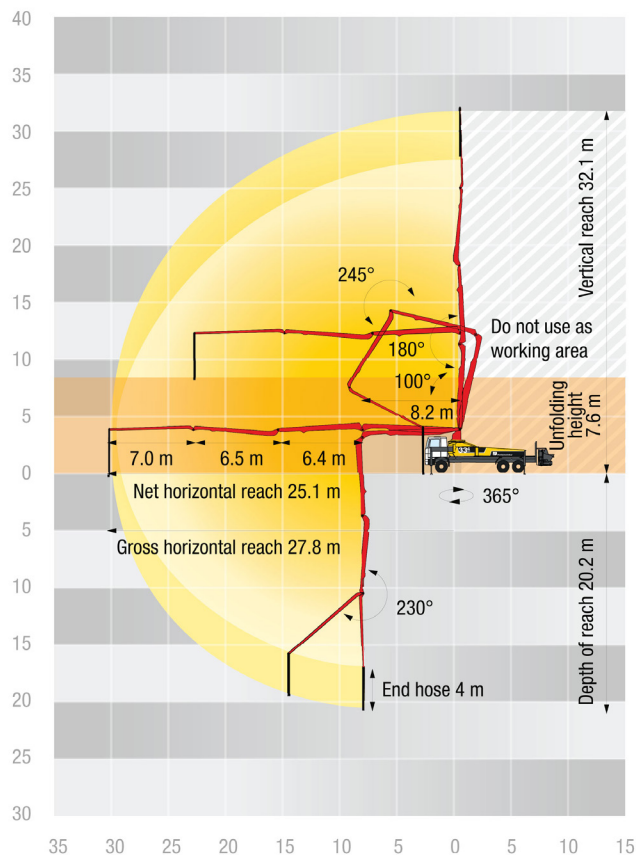
LED Lights: LED lights are located in critical operation locations: rear area, surrounding area, hopper, water box, support legs, control box, gauge ports, toolbox, and end hose.

Complete Water Tank Solution: Ground access lever allows you to change between output and input of water. When you move the lever to input water, you can connect a hose and fill at ground level. No need to climb and drag hoses on the machine. The water tank also includes a convenient spigot into the water box and a high-quality flushing pump.

Key Features

- Free flow hydraulics (FFH)
- Putzmeister .16H pump cell
- Improved boom design and pipe routing to improve material flow
- Pre-loaded boom rest switch and boom guides for easy folding and transportation
- Outrigger legs have larger cross sections and increased clamping to improve stability
- LED lights located in critical operation locations
- Complete water tank solution that allows for maximized flexibility and use
- Improved accessibility and weather-proofing
- Ability to easily add attachments, racks, and storage with modular design
- Single point of access for gauges and auto lube (hopper, four-point bearing, and A-hinge)
- Fuel storage in leg is a FMVSS Certified design.





33Z-METER TRUCK-MOUNTED SPECIFICATIONS

| | | |
|----------------------|------------|------------|
| Length | 35' 6" | (10.84m) |
| Width | 8' 2" | (2.50m) |
| Height | 12' 10" | (3.92m) |
| Wheelbase | 233" | (5664mm) |
| Front Axle Weight | 18,640 lbs | (8,455kg) |
| Approx. Total Weight | 51,474 lbs | (23,348kg) |

Based on Model Mack TERRAPRO 613 (MRU) with .16H pump cell.
Weights are approximate and include pump, boom, truck, driver and some fuel. Varies with options selected.
Dimensions will vary with different truck makes, models and specifications.

BOOM SPECIFICATIONS | Z-FOLD DESIGN

| | | |
|--------------------------------|---------|---------|
| Height & Reach | | |
| Vertical Reach | 105' 3" | (32.1m) |
| Horizontal Reach | 100' 0" | (30.5m) |
| Reach from Front of Truck* | 91' 2" | (27.8m) |
| Reach Depth | 67' 10" | (20.2m) |
| Unfolding Height | 24' 11" | (7.6m) |
| 4-Section Boom | | |
| 1st section rotation | 100° | |
| 2nd section rotation | 180° | |
| 3rd section rotation | 245° | |
| 4th section rotation | 230° | |
| 1st section length | 26' 10" | (8.2m) |
| 2nd section length | 20' 11" | (6.4m) |
| 3rd section length | 21' 3" | (6.5m) |
| 4th section length | 22' 11" | (7.0m) |
| General Specs | | |
| Pipeline Size (ID) metric ends | 5" | (125mm) |
| Rotation | 365° | |
| End Hose - length | 10' 0" | (3.0m) |
| End Hose - diameter | 5" | (125mm) |

OUTRIGGER SPECIFICATIONS

| | | |
|--|---------|--------|
| Front Outrigger Spread L - R — hydraulically extend out & down | 18' 0" | (5.5m) |
| Rear Outrigger Spread L - R — hydraulically swing out & extend down | 22' 11" | (7.0m) |

PUMP SPECIFICATIONS

| | 33Z.12H | 33Z.16H |
|--|---|---|
| Output — rod side | 144 yd ³ /hr (110m ³ /hr) | 209 yd ³ /hr (160m ³ /hr) |
| — piston side | 97 yd ³ /hr (74m ³ /hr) | 141 yd ³ /hr (108m ³ /hr) |
| Pressure — rod side | 1,233 psi (85 bar) | 1,233 psi (85 bar) |
| — piston side | 1,885 psi (130 bar)* | 1,885 psi (130 bar)* |
| Material Cylinder Diameter | 9" | (230mm) |
| Stroke Length | 83" (2100mm) | 83" (2100mm) |
| Maximum Strokes / Minute — rod side | 21 | 31 |
| Maximum Strokes / Minute — piston side | 14 | 21 |
| Volume Control | 0-Full | 0-Full |
| Vibrator | Standard | Standard |
| Hard-chromed Material Cylinders | Standard | Standard |
| Hydraulic System | Free Flow | Free Flow |
| Hydraulic System Pressure | 5,075 psi (350 bar) | 5,075 psi (350 bar) |
| Differential Cylinder Diameter | 5.5" (140mm) | 5.5" (140mm) |
| Rod Diameter | 3.1" (80mm) | 3.1" (80mm) |
| Maximum Size Aggregate | 2.5" (63mm) | 2.5" (63mm) |
| Water Tank — pedestal | 185 gal (700L) | 185 gal (700L) |

Maximum theoretical values listed.

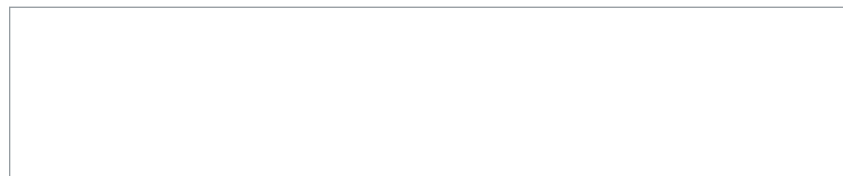
* Applies to units mounted on PMA stock truck — Mack MRU 613.

• Standard delivery line system rated at max line pressure of 1,233 psi (85 bar)

• Ergonic Pump System (EPS) is standard.

Photos and drawings are for illustrative purposes only.

Authorized Distributor



Putzmeister America, Inc. Phone (262) 886-3200
1733 90th Street Toll-free (800) 884-7210
Sturtevant, WI 53177 USA Fax (262) 884-6338

PutzmeisterAmerica.com

pmr@putzmeister.com

CT 4827 US



© Putzmeister America, Inc. 2021

Printed in the USA (2.01412)